

Rapid Detection and Identification of *Pseudomonas aeruginosa* and *Escherichia coli* as Pure and Mixed Cultures in Bottled Drinking Water Using Fourier Transform Infrared Spectroscopy and Multivariate Analysis

HAMZAH M. AL-QADIRI,[†] MURAD A. AL-HOLY,[‡] MENGSHI LIN,[†]
NIVIN I. ALAMI,[§] ANNA G. CAVINATO,^{||} AND BARBARA A. RASCO*,[†]

Department of Food Science and Human Nutrition, Box 646376, Washington State University, Pullman, Washington 99164-6376, Department of Clinical Nutrition and Dietetics, Faculty of Allied Health Sciences, Hashemite University, Zarqa, Jordan, Water and Environment Research and Study Center, The University of Jordan, Amman, Jordan, and Chemistry and Biochemistry Program, Eastern Oregon University, One University Boulevard, La Grande, Oregon 97850-2899

Fourier transform infrared (FT-IR) spectroscopy and multivariate analysis were used to identify *Pseudomonas aeruginosa* and *Escherichia coli* ATCC 25922 inoculated into bottled drinking water. Three inoculation treatments were examined as examined: (i) *E. coli* ATCC 25922 ($N = 3$), (ii) *P. aeruginosa* ($N = 3$), and (iii) a 1:1 (v:v) mixed culture of both *P. aeruginosa* and *E. coli* ATCC 25922 ($N = 3$). The control treatment was noninoculated drinking water ($N = 3$). Second derivative transformation and loadings plots over the range of 1800–900 cm^{-1} indicate variations in the following bacterial constituents: amide I band ca. 1650 cm^{-1} , amide II band ca. 1540 cm^{-1} , phosphodiester backbone of nucleic acids ca. 1242 and 1080 cm^{-1} , and polysaccharide compounds ca. 1050–950 cm^{-1} . Cells with the different treatments were clearly segregated from a mean centered principal component analysis. By using soft independent modeling of class analogy analysis, spectra from a given treatment could be correctly classified 83–88% of the time. These results suggest that FT-IR spectroscopy can determine whether a pure culture is present, in addition to confirming that this method can discriminate between closely related bacteria based on differences in biochemical and phenotypic characteristics that can be detected in this spectral region.

KEYWORDS: FT-IR; spectroscopy; drinking water contamination; *P. aeruginosa*; *E. coli*; PCA; SIMCA; bacterial differentiation; mixed bacterial cultures

INTRODUCTION

The public health standards for safe drinking water for human consumption have the following guidelines: a maximum of 500 colony-forming unit (CFU) per mL of heterotrophic plate count (HPC), free from coliforms, and a nephelometric turbidity of less than 2 (*I*). Drinking water should not contain any bacteria indicative of fecal pollution such as *Pseudomonas* spp. (*2*). Microbial contamination is the most common and widespread health risk associated with drinking water, either directly or indirectly, by animal or human excreta (*3*). In developing nations, more than 250 million new cases of waterborne diseases are reported annually. This has resulted in high morbidity and mortality rates, especially in young children (*4*).

Oligotrophic bacteria such as pseudomonads are capable of reproducing and forming biofilms under conditions that are usually considered nutrient restricted. Such organisms are found in low nutrient environments such as drinking water, groundwater, and surface water (*4*), attaining population densities of 10^6 – 10^7 cells per mL in distilled water (*5*). *Pseudomonas aeruginosa* is a Gram-negative, rod-shaped, strictly aerobic, oxidase-positive, catalase-positive bacterium that produces diffusible and/or insoluble pigments (*6*). This bacterium does not require organic growth factors. It has traditionally served as a surrogate or indicator for the presence of other opportunistic pathogens.

Now, *P. aeruginosa* is considered to be an opportunistic pathogen in patients with low general or local resistance against infections (*6*) and its presence is unacceptable because it has been implicated in waterborne and foodborne diseases; it is now considered to be a primary infectious agent (*7*). The presence of *P. aeruginosa* as a means of assessing the hygienic quality of drinking water has been advocated, and levels of this

* To whom correspondence should be addressed. Tel: 509-335-1858. Fax: 509-335-4815. E-mail: rasco@wsu.edu.

[†] Washington State University.

[‡] Hashemite University.

[§] The University of Jordan.

^{||} Eastern Oregon University.

B

organism provide an indication of the general cleanliness of the water distribution system.

The coliform bacteria are members of the family Enterobacteriaceae and consist of genera *Escherichia*, *Enterobacter*, *Citrobacter*, and *Klebsiella*. The presence of coliforms in drinking water suggests inadequate treatment, posttreatment contamination, or excessive nutrients (3), and levels for acceptable drinking water should be nondetectable in a 100 mL sample. Traditionally, detection of coliform bacteria in drinking water has been viewed as an indicator of fecal contamination through a cross-connection, an inability to maintain a disinfectant residual in distributed water, or inadequate treatment (8). *Escherichia coli* specifies the presence of human or mammalian feces and is rarely found in water or soil that has not been subjected to fecal pollution.

Classical microbiological examinations performed in drinking water to detect waterborne pathogens include most probable number, membrane filtration techniques, and, most recently, enzyme substrate tests. However, these techniques are time consuming, require further identification and verification tests, and are labor intensive. There is a need for rapid and accurate screening methods to detect and verify waterborne pathogens.

Fourier transform infrared (FT-IR) absorbance spectroscopy (in the mid-IR range, usually defined as 4000–400 cm^{-1} or 2500–25000 nm) has sufficient resolution to distinguish intact microbial cells at the strain level (9). When FT-IR is applied in combination with multivariate statistical techniques, quantitative analysis of the cellular contents for bacterial cells is possible. The resulting spectra for microbial cells represent the “total” biochemical composition of those cells (10). FT-IR spectroscopy measures vibrations of functional groups and highly polar bonds. These spectral features of many important biochemical constituents create a “fingerprint” for a bacterial strain. For microbial samples, these spectral are most commonly DNA/RNA, proteins, and membrane and cell wall amine- and fatty acid-containing components (11).

FT-IR has been successfully applied on pure microbial cultures to identify strains of bacteria, yeast, and fungi (12–15) and, more recently, specific foodborne pathogens (13, 16) including *Listeria* spp., *Staphylococcus* spp., *Clostridium* spp., *Streptococcus* spp., *Legionella* spp., *P. aeruginosa*, *Bacillus cereus*, and *E. coli* (13, 17, 18). Chemometric methods that include principal component analysis (PCA) and soft independent modeling by class analogy (SIMCA) are widely used in the analysis of infrared spectra within the fields of biology and agricultural sciences (19). PCA is a mathematical procedure that transforms a number of possibly correlated variables into a smaller number of uncorrelated variables called principal components (PCs). PCA analysis is a helpful technique to show if there are natural clusterings in the data and if there are outlier samples. The first PC is the combination of variables that explains the greatest amount of variation. The second PC defines the next largest amount of variation and is independent (orthogonal) to the first PC. The end result of PCA is to get graphical representations of similarities and differences from infrared multivariate spectral data (19).

The main objective of this study was to examine the feasibility of FT-IR spectroscopy combined with multivariate statistical methods to identify *P. aeruginosa* and *E. coli* in pure and mixed cultures in bottled drinking water.

MATERIALS AND METHODS

Microorganisms and Growth Conditions. Bacterial cells that used in this study were obtained from the culture collection in the Department of Food Science and Human Nutrition, Washington State University.

Bacterial strains including *E. coli* ATCC 25922 and *P. aeruginosa* were activated by transferring bacterial cells from refrigerated slant to tryptic soy agar (TSA) (Difco, MD), and cultured plates were incubated at 37 °C for 24 h. A representative colony was then inoculated into 50 mL of brain heart infusion broth (Bacto, MD), and strains were grown aerobically at 37 °C for 24 h to reach the concentration of ($\sim 1 \times 10^8$ – 10^9 CFU per mL).

Microbial Testing of Drinking Water Samples. Bottled drinking water (treated by reverse osmosis and ozone sterilization) was purchased from a local grocery store the day that the experiment was conducted. To examine the microbial quality of purchased bottled water, microbiological tests including total HPC, fecal coliform (i.e., *E. coli*), and *P. aeruginosa* were carried out for each sample in a duplicate manner using a membrane filtration technique (20). Under aseptic conditions, 100 mL of drinking water sample was filtered through a gridded sterile cellulose-nitrate membrane filter (0.45 μm pore size, 47 mm diameter, Sartorius type filters) under partial vacuum. The membrane filters were immediately removed with sterile forceps and placed on the following media with rolling motion to avoid entrapment of air: TSA (for detection of HPC), m-Endo agar LES (Difco) for selective detection and enumeration of *E. coli* from water, and M-PA-C agar (BBL, MD) for selective detection and enumeration of *P. aeruginosa* from water (20). Petri dishes were incubated at 37 °C for 48 h.

Inoculation of Drinking Water. Samples ($N = 3$) of 45 mL of drinking water were inoculated with 5 mL of *E. coli* ATCC 25922 broth (stationery phase culture), 5 mL of *P. aeruginosa* broth (stationery phase culture), or 2.5 mL of *E. coli* ATCC 25922 broth and 2.5 mL of *P. aeruginosa* broth. The control treatment was prepared by adding 5 mL of noninoculated broth to the drinking water samples. Samples were then incubated at 37 °C for 48 h. High cell concentrations were used because researchers (14, 21) have found that bacterial concentrations of less than 10^4 CFU per mL may not provide an adequate FT-IR signal. The inoculated and control drinking water samples were examined for *E. coli*, *P. aeruginosa*, and mixed cultures at the end of the incubation period. Appropriate serial dilutions (using sterile 0.1% peptone) were recovered for membrane filtration techniques as previously described (20).

After incubation at 37 °C for 48 h, 10 mL of each inoculated and control drinking water sample was filtered through an aluminum oxide membrane filter (0.2 μm pore size, 25 mm o.d.) (Anodisc, Whatman Inc., Clifton, NJ) to harvest bacterial cells; this membrane filter did not contribute significantly to the bacterial spectra and gave a smooth and flat surface to form a bacterial film (19, 21). At the end of each sample filtration and with the filter still in place, the interior surface of the funnel was rinsed with 20 mL of sterile 0.9% saline solution to remove bacterial metabolites from the surface of the filter (21). The Anodisc filters were then air-dried under laminar flow at room temperature for 5 min to allow a homogeneous dried film of bacterial cells. This filtration technique was found to give more homogeneous distribution of cells and more reliable results than the centrifugation one.

Using this filtration method to harvest bacterial cells on an Anodisc membrane gave a more homogeneous distribution of cells and more reliable spectral results than recovering cells by centrifugation and then applying them to the membrane (19), thereby increasing the reproducibility of the spectroscopic method.

FT-IR Spectroscopy and Measurement. FT-IR spectra were recorded using a Nicolet 380 FT-IR spectrometer (Thermo Electron Inc., San Jose, CA). The Anodisc membrane filters coated with a very thin layer of bacterial cells were placed in direct contact with an infrared attenuated total reflection (ATR) diamond crystal. This technique was used to study the chemical composition of a smooth surface (i.e., biofilms) (22). FT-IR spectra were recorded from 4000 to 500 cm^{-1} at a resolution of 2 cm^{-1} . Sixty spectra ($N = 60$) were acquired at room temperature, and each spectrum was composed of an average of 36 separate scans. FT-IR spectra were mean centered and baseline corrected.

Multivariate Analysis. OMNIC (Thermo Electron Inc.) and Delight version 3.2.1 (Tetrahon Systems, Wilmington, MA) software were used to conduct data analysis. Data preprocessing algorithms were performed to reduce overlapping spectral features (23). Spectral data were first

P. aeruginosa and *E. coli* as Cultures in Water**Table 1.** Average Microbial Concentration after Inoculation of Drinking Water

sample treatment	count (CFU/mL)	no. of cells per mm ^{2a}
control	0	0
<i>P. aeruginosa</i>	8.1×10^9	1.65×10^8
<i>E. coli</i> ATCC 25922	6.2×10^9	1.26×10^8
mixed culture ^b	9.2×10^9	1.87×10^8

^a Volume of filtered sample = 10 mL, and surface area of anodisc membrane = 490.9 mm². ^b Microbial count for *P. aeruginosa* = 5.1×10^9 ; and microbial count for *E. coli* ATCC 25922 = 4.1×10^9 .

197 binned by 2 cm⁻¹ and then smoothed with a Gaussian function of 4
198 cm⁻¹ and followed by a second derivative transformation of 15 cm⁻¹
199 gap (24).

200 The multivariate statistical analysis techniques of PCA and SIMCA
201 were used for spectral data analysis. PCA was used to capture the related
202 variations among FT-IR spectra, remove random noise (26), and
203 determine whether there was natural clustering within the data (10,
204 19, 25). SIMCA was extensively used to classify samples according to
205 their analogy to the training set samples (21).

RESULTS AND DISCUSSION

206
207 The drinking water before inoculation showed that the water
208 samples were free from heterotrophic bacterial cells, coliform,
209 and *P. aeruginosa*. **Table 1** shows the average microbial loads
210 after inoculation of drinking water samples at 48 h and a number
211 of bacterial cells per mm² of Anodisc membrane filter. Both *P.*
212 *aeruginosa* and *E. coli* cells could survive and grow in drinking
213 water despite a lack of essential nutrients, with *P. aeruginosa*
214 growing to a slightly higher density than *E. coli* under the
215 conditions tested here.

216 Both *P. aeruginosa* and *E. coli* are Gram-negative rods and
217 have many similarities in cell wall and cell membrane structure,
218 specifically outer membrane components including: lipopolysac-
219 charides (LPS), phospholipids, and peptidoglycans (27, 28).

220 **Figure 1** shows representative FT-IR spectra (4000–800
221 cm⁻¹) of control (A), *E. coli* ATCC 25922 (B), *P. aeruginosa*
222 (C), and mixed culture of both microbes (D) isolated from
223 drinking water. The absorption peaks around 3000 cm⁻¹ (~2960
224 and ~2929 cm⁻¹) are mainly due to the asymmetric stretch of
225 CH₂ and CH₃ of bacterial cell wall fatty acids and other
226 components (10, 22). To examine the FT-IR spectral patterns
227 of bacterial cells, we concentrated on two different regions: (I)
228 1800–1300 cm⁻¹ is mainly due to (i) C=O stretching vibrations
229 of ester functional groups basically from lipids and fatty acids
230 (~1740 cm⁻¹) (15), (ii) C=O stretching vibrations of amides
231 associated with proteins (amide I band at ~1650 cm⁻¹) (10,
232 16, 18), (iii) N–H deformation of amides associated with
233 proteins (amide II band at ~1540 cm⁻¹), and (iv) CH₃ and CH₂
234 asymmetric and symmetric deformation of proteins (~1455 and
235 ~1398 cm⁻¹) (10, 18). The second region (II) located between
236 1300 and 900 cm⁻¹ consists of the vibrational features of DNA/
237 RNA, proteins, and membrane and cell wall components (11).
238 The most significant differences between the bacteria spectral
239 features in the 1300–900 cm⁻¹ region are mainly due to (i)
240 P=O asymmetric and symmetric stretches of the phosphodiester
241 backbone of nucleic acids DNA and RNA at ~1242 and ~1080
242 cm⁻¹, respectively, and (ii) C–O–C stretching vibrations of
243 polysaccharides content of bacterial cells (1200–900 cm⁻¹) (10,
244 16, 18).

245 As shown in **Figure 1**, there are variations among *E. coli*
246 and *P. aeruginosa* in regions associated with amide I band (1650
247 cm⁻¹), amide II band (1550 cm⁻¹), CH₃ and CH₂ asymmetric

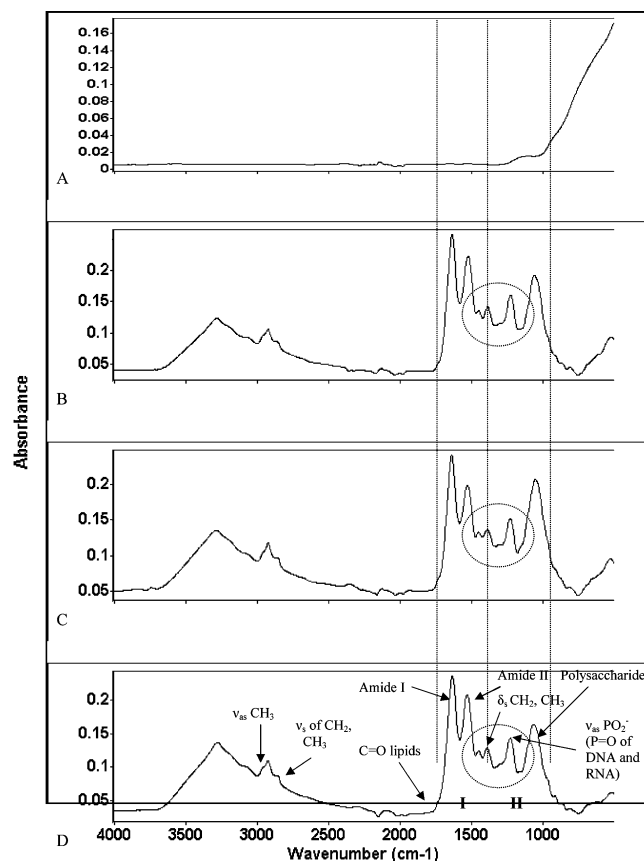


Figure 1. Representative FT-IR spectra (4000–800 cm⁻¹) of control (A), *E. coli* ATCC 25922 (B), *P. aeruginosa* (C), and mixed culture (D) isolated from drinking water. ν_{as} = asymmetric stretch, ν_s = symmetric stretch, and δ_s = symmetric deformation.

248 and symmetric deformation (~1455 and ~1398 cm⁻¹), and the
249 stretching vibrations of polysaccharides (1200–900 cm⁻¹). To
250 make differences in the spectral features more distinctive, data
251 preprocessing algorithms were used to amplify spectral variations
252 (10, 29).

253 The major preprocessing algorithms involved binning and
254 smoothing to reduce overlapping spectral features and to
255 eliminate high-frequency instrumental noise and normalization
256 of bacterial spectra that result from different concentrations of
257 the same bacterial cells to balance the variations in path length
258 strength and to allow for comparison (30). However, the most
259 important steps in evaluating spectral features may be the second
260 derivative transformation, which separates overlapping bands
261 (29), reducing the variability between replicate spectra due to
262 baseline offsets (10), generating an estimate of the number of
263 overlapped bands within the region (29). The net result of
264 spectral derivatives is to enhance the clarity of bacterial spectral
265 features and to improve spectral resolution.

266 **Figure 2** shows the same spectral region used in **Figure 1**,
267 after a 15-point second-order derivatization (1800–1300 cm⁻¹).
268 Differences between the spectra of bacterial strains are more
269 distinctive particularly in the amide I and amide II regions due
270 to C=O stretching vibration and N–H deformation of amides
271 associated with proteins in the range of ~1650 and ~1540 cm⁻¹,
272 respectively. Other variations due to C=O stretching vibration
273 of ester functional groups from lipids and fatty acids (~1740
274 cm⁻¹) and CH₃ and CH₂ asymmetric and symmetric deformation
275 of proteins (~1455 and ~1398 cm⁻¹) were apparent. **Figure 3**
276 illustrates the second derivative transformation (15-point) of
277 bacterial spectra in region II, 1300–900 cm⁻¹. Differences

D

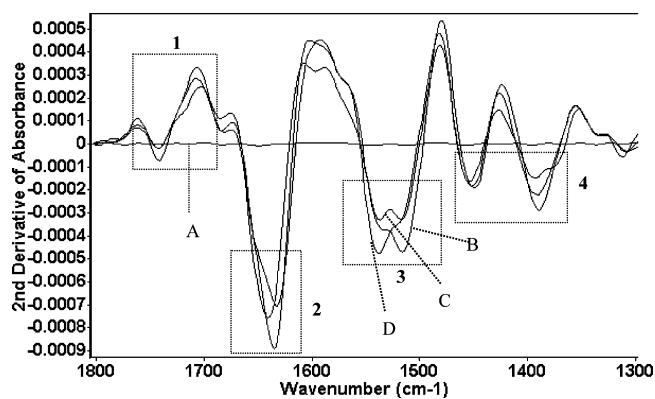


Figure 2. Representative second derivative transformation FT-IR spectra (1800–1300 cm^{-1}) of control (A), *E. coli* ATCC 25922 (B), *P. aeruginosa* (C), and mixed culture (D). Boxes: 1, C=O stretching vibration of ester functional groups from lipids and fatty acids; 2, C=O stretching vibration of amides associated with proteins (amide I); 3, N-H deformation of amides associated with proteins (amide II); and 4, CH_3 and CH_2 asymmetric and symmetric deformation of proteins.

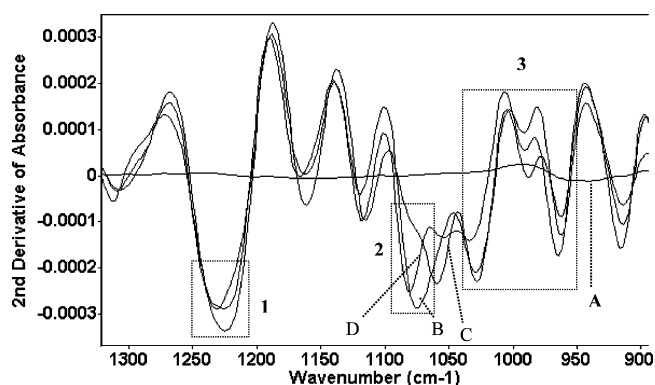


Figure 3. Representative second derivative transformation for FT-IR spectra (1300–900 cm^{-1}) of control (A), *E. coli* ATCC 25922 (B), *P. aeruginosa* (C), and mixed culture (D). Boxes: 1, ν_{as} P=O of the phosphodiester backbone of nucleic acids; 2, ν_{s} P=O of the phosphodiester backbone of nucleic acids; and 3, C–O–C stretching vibration of polysaccharides.

278 between *P. aeruginosa* and *E. coli* and for the mixed culture
 279 can be seen in the P=O asymmetric and symmetric stretches
 280 of the phosphodiester backbone of DNA ($\sim 1242 \text{ cm}^{-1}$) and
 281 RNA ($\sim 1080 \text{ cm}^{-1}$). Features attributable to bacterial cell wall
 282 peptidoglycan due to C–O–C stretching vibration of the
 283 polysaccharides content of bacterial cells can be seen around
 284 $1050\text{--}950 \text{ cm}^{-1}$.

285 To differentiate between bacterial cells, multivariate statistical
 286 analysis techniques (PCA and SIMCA) were performed. PCA
 287 is widely used to explain infrared spectral data variances and
 288 to capture related variations (29) and cluster samples depending
 289 upon differences in the FT-IR spectral patterns that result from
 290 variations in the major cellular constituents of microorganisms.

291 A mean-centered PCA was carried out on the second
 292 derivative FT-IR spectra over the range of $1800\text{--}900 \text{ cm}^{-1}$.
 293 **Figure 4** shows two-dimensional PCA clustering results from
 294 FT-IR spectra and shows clear segregation between pure and
 295 mixed cultures of *E. coli* ATCC 25922 and *P. aeruginosa*
 296 resulting from variations in quantity and distribution of major
 297 bacterial cellular constituents such as nucleic acids, proteins,
 298 phospholipids, peptidoglycan, and LPSs of these closely related
 299 bacteria (22). The distinctive clustering for the mixed culture
 300 could also be due to factors associated with the growth of these

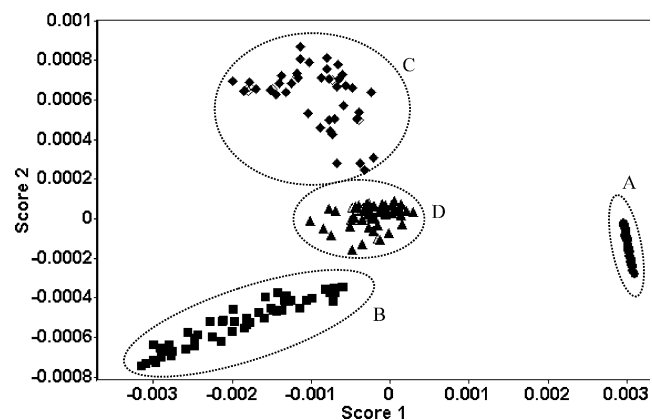


Figure 4. Principle components analysis (PCA) for control (A), *E. coli* ATCC 25922 (B), *P. aeruginosa* (C), and mixed culture (D).

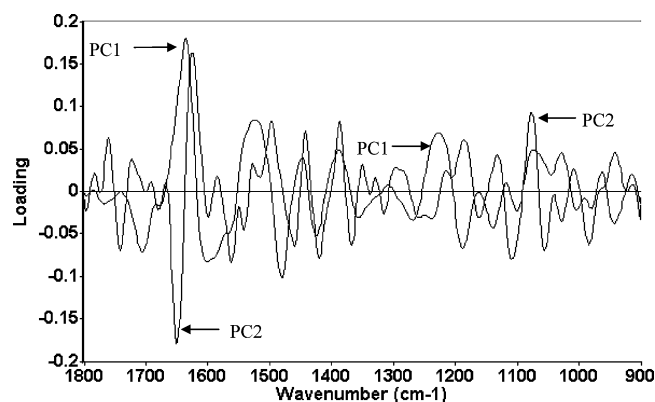


Figure 5. Loadings plot of the first and the second principle components (PCs) obtained from PCA analysis of FT-IR spectra of the four treatments.

301 microbes in mixed culture. *E. coli* ATCC 25922 and *P.*
 302 *aeruginosa* shared minimal available nutrients from drinking
 303 water, and this may have affected metabolic process for both
 304 and their resultant spectral features.

305 **Figure 5** shows the first and the second loadings plot from
 306 PCA analysis over the range of $1800\text{--}900 \text{ cm}^{-1}$. Loadings plot
 307 emphasizes the contribution of each variable (wavenumber) to
 308 each PC providing an indication of which spectral region makes
 309 the most significant contributions to data variation (10, 29).
 310 Large loadings (positive or negative) are linked to the regions
 311 within the original spectra that are responsible for bacterial
 312 discrimination (31). Over the range of $1800\text{--}900 \text{ cm}^{-1}$, loadings
 313 1 and 2 were accounted for 81% of the total variability (71 and
 314 10%, respectively) As shown in **Figure 5**, important loadings
 315 were observed at the following regions: amide I at $\sim 1650 \text{ cm}^{-1}$,
 316 amide II at $\sim 1540 \text{ cm}^{-1}$, CH_3 and CH_2 of protein components
 317 around 1455 and 1398 cm^{-1} , P=O of the phosphodiester
 318 backbone of nucleic acids around 1242 and 1080 cm^{-1} , and
 319 polysaccharide compounds around $1050\text{--}950 \text{ cm}^{-1}$.

320 SIMCA analysis was used to classify samples using models
 321 developed from spectra from *E. coli* and *P. aeruginosa*. **Figure**
 322 **6** shows SIMCA classification results of *E. coli* ATCC 25922
 323 as compared to the other test treatments over the range of
 324 $1800\text{--}900 \text{ cm}^{-1}$. The SIMCA procedure was used to classify bacterial
 325 spectra. It aims to assign a new treatment to the class where it
 326 shows the largest similarity. Accordingly, it allows for treatments
 327 to have individualities and only the common properties of the
 328 classes are modeled. Here, 53 out of 60 spectra (88.3%) of *E.*
 329 *coli* ATCC 25922 were correctly classified. **Table 2** shows
 330 SIMCA classification results for each sample treatment.

331 Previous results indicate that FT-IR spectroscopy could be

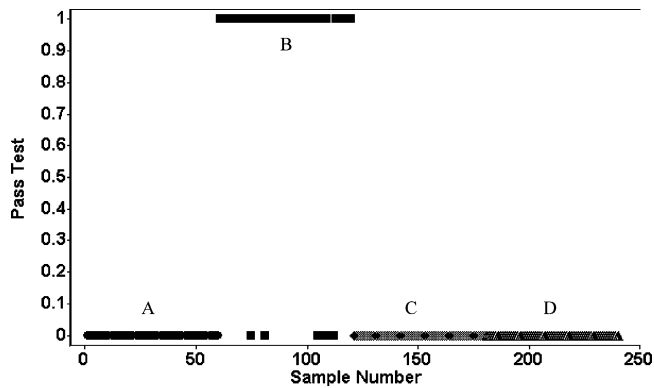


Figure 6. SIMCA classification of *E. coli* ATCC 25922 (B) as compared to control (A), *P. aeruginosa* (C), and mixed culture (D).

Table 2. SIMCA Classification Results of Each Sample Treatment as Compared to the Other Test Treatments

sample treatment	correctly classified spectra	
	no.	%
control	56	93.3
<i>E. coli</i> ATCC 25922	53	88.3
<i>P. aeruginosa</i>	50	83.3
mixed culture	50	83.3

used to discriminate between closely related bacterial cells and could be a powerful tool to subtype these cells based upon differences in biochemical and phenotypic characteristics of microbial cells using multivariate analysis techniques and to differentiate pure from mixed cultures of closely related bacteria.

In conclusion, by using FT-IR spectroscopy and multivariate analysis (PCA and SIMCA), it is possible to detect and identify the primary bacterial contaminants *P. aeruginosa* and *E. coli* in drinking water. Furthermore, FT-IR spectra of the mixed cultures are distinct from those of pure cultures. The greatest spectral variation between these microbes was observed between 1800 and 900 cm^{-1} : for the amide I band at $\sim 1650 \text{ cm}^{-1}$, amide II band at $\sim 1540 \text{ cm}^{-1}$, CH_3 and CH_2 of protein components around 1455 and 1398 cm^{-1} , P=O of the phosphodiester backbone of nucleic acids around 1242 and 1080 cm^{-1} , and polysaccharide compounds around 1050–950 cm^{-1} . Further development of this technique will be to establish a spectral library of major food- and waterborne pathogens and to evaluate other statistical analysis methods such as artificial neural networks for data analyses.

ACKNOWLEDGMENT

We gratefully thank Dr. Peter Griffiths from the University of Idaho for advice on methods and data analysis and Dr. D.-H. Kang and Peter Gray from Washington State University for technical support.

LITERATURE CITED

- (1) Barbeau, J.; Tanguay, R.; Faucher, E.; Avezard, C.; Trudel, L.; Cote, L.; Prevost, A. P. Multiparametric analysis of waterline contamination in dental units. *Appl. Environ. Microbiol.* **1996**, *62*, 3954–3959.
- (2) World Health Organization. *Guidelines for Drinking Water Quality*, 2nd ed.; World Health Organization: Geneva, 1997; Vol. 3, Surveillance and control of community supplies.
- (3) World Health Organization. *Guidelines for Drinking Water Quality*, 2nd ed.; World Health Organization: Geneva, 1996; Vol. 2, Health criteria and other supporting information.

- (4) Emde, K. M. E.; Finch, G. R. Detection and occurrence of waterborne bacterial and viral pathogens. *Res. J. WPCF* **1991**, *63*, 730–734.
- (5) McFeters, G. A.; Broadaway, S. C.; Pyle, B. H.; Egozy, Y. Distribution of bacteria within operating laboratory water purification systems. *Appl. Environ. Microbiol.* **1993**, *59*, 1410–1415.
- (6) Palleroni, N. J. Human- and animal-pathogenic pseudomonads. In *The Prokaryotes*, 2nd ed.; Balows, A., Truper, H. G., Dworkin, M., Harder, W., Schleifer, K. H., Eds.; Springer-Verlag: New York, 1992; pp 3086–3102.
- (7) Morais, P. V.; Mesquita, C.; Andrade, J.; DaCosta, M. Investigation of persistent colonization by *Pseudomonas aeruginosa*-like strains in a spring water bottling plant. *Appl. Environ. Microbiol.* **1997**, *63*, 851–856.
- (8) LeChevallier, M. W.; Welch, N. J.; Smith, D. B. Full-scale studies of factors related to coliform regrowth in drinking water. *Appl. Environ. Microbiol.* **1996**, *62*, 2201–2211.
- (9) Helm, D.; Labischinski, H.; Schallehn, G.; Naumann, D. Classification and identification of bacteria by Fourier transform infrared spectroscopy. *J. Gen. Microbiol.* **1991**, *137*, 69–79.
- (10) Kansiz, M.; Heraud, P.; Wood, B.; Burden, F.; Beardall, J.; McNaughton, D. Fourier transform infrared microspectroscopy and chemometrics as a tool for the discrimination of cyanobacterial strains. *Phytochemistry* **1999**, *52*, 407–417.
- (11) Goodacre, R.; Timmins, E. M.; Rooney, P. J.; Rowland, J. J.; Kell, D. B. Rapid identification of *Streptococcus* and *Enterococcus* species using diffuse reflectance-absorbance Fourier transform infrared spectroscopy and artificial neural networks. *FEMS Microbiol. Lett.* **1996**, *140*, 233–239.
- (12) Kummerle, M.; Scherer, S.; Seiler, H. Rapid and reliable identification of food-borne yeasts by Fourier transform infrared spectroscopy. *Appl. Environ. Microbiol.* **1998**, *64*, 2207–2214.
- (13) Mossoba, M.; Al-Khaldi, S.; Jacobson, A.; Crowe, L.; Fry, F. Application of a disposable transparent filtration membrane to the infrared spectroscopic discrimination among bacterial species. *J. Microbiol. Methods* **2003**, *55*, 311–314.
- (14) Naumann, D.; Helm, D.; Labischinski, H. Microbiological characterization by FT-IR spectroscopy. *Nature* **1991**, *35*, 81–82.
- (15) Wenning, M.; Seiler, H.; Scherer, S. Fourier-transform infrared microspectroscopy, a novel and rapid tool for identification of yeasts. *Appl. Environ. Microbiol.* **2002**, *68*, 4717–4721.
- (16) Choo-Smith, L. P.; Maquelin, K.; Vreeswijk, T. V.; Bruining, H. A.; Puppels, G. J.; Ngo Thi, N. A.; Krischner, C.; Naumann, D.; Ami, D.; Villa, A. M.; Orsini, F.; Doglia, S. M.; Lamfarraj, H.; Sockalingum, G. D.; Manfait, M.; Allouch, P.; Endtz, H. P. Investigating microbial (micro) colony heterogeneity by vibrational spectroscopy. *Appl. Environ. Microbiol.* **2001**, *67*, 1461–1469.
- (17) Lin, S. F.; Schraft, J. H.; Griffiths, M. W. Identification of *Bacillus cereus* by Fourier transform infrared spectroscopy (FTIR). *J. Food Prot.* **1998**, *61*, 921–923.
- (18) Lin, M.; Al-Holy, M.; Al-Qadiri, H.; Kang, D.-H.; Cavinato, A. G.; Huang, Y.; Rasco, B. A. Discrimination of intact and injured *Listeria monocytogenes* by Fourier transform infrared spectroscopy and principal component analysis. *J. Agric. Food Chem.* **2004**, *52*, 5769–5772.
- (19) Rodriguez-Saona, L. E.; Khambaty, F. M.; Fry, F. S.; Calvey, E. M. Rapid detection and identification of bacterial strains by Fourier transform near-infrared spectroscopy. *J. Agric. Food Chem.* **2001**, *49*, 574–579.
- (20) American Public Health Association (APHA). *Standard Methods for the Examination of Water and Wastewater*, 20th ed.; American Public Health Association: Washington, DC, 1998.
- (21) Al-Holy, M. A.; Lin, M.; Cavinato, A. G.; Rasco, B. A. The use of Fourier transform infrared spectroscopy to differentiate *Escherichia coli* O157:H7 from other bacteria inoculated into apple juice. *Food Microbiol.* **2006**, *23*, 162–168.

F PAGE EST: 5.3

Al-Qadiri et al.

- 438 (22) Schmitt, J.; Flemming, H.-C. FTIR-spectroscopy in microbial
439 and material analysis. *Int. Biodeterior. Biodegrad.* **1998**, *41*,
440 1–11.
- 441 (23) Huang, Y.; Cavinato, A. G.; Mayes, D. M.; Bledsoe, G. E.;
442 Rasco, B. A. Nondestructive prediction of moisture and sodium
443 chloride in cold smoked Atlantic salmon (*Salmo salar*). *J. Food*
444 *Sci.* **2002**, *67*, 2543–2547.
- 445 (24) Lin, M.; Cavinato, A. G.; Mayes, D. M.; Smiley, S.; Huang, Y.;
446 Al-Holy, M.; Rasco, B. A. Bruise detection in Pacific pink
447 salmon (*Oncorhynchus gorbuscha*) by visible and short-
448 wavelength near-infrared (SW-NIR) spectroscopy (600–1100
449 nm). *J. Agric. Food Chem.* **2003**, *51*, 6404–6408.
- 450 (25) Martens, H.; Naes, T. *Multivariate Calibration*; John Wiley and
451 Sons: New York, 1989.
- 452 (26) Goodacre, R.; Timmins, E. M.; Burton, R.; Kaderbhai, R.;
453 Woodward, A. M.; Kell, D. B. Rapid identification of urinary
454 tract infection bacteria using hyperspectral whole-organism
455 fingerprinting and artificial neural networks. *Microbiology* **1998**,
456 *144*, 1157–1170.
- 457 (27) Atlas, R. M. *Microbiology Fundamentals and Applications*, 2nd
458 ed.; Macmillan Publishing Company: New York, 1988.
- 459 (28) Collee, J. G.; Miles, R. S. Tests for Identification of Bacteria.
460 In *Practical Medical Microbiology*, 13th ed.; Collee, J. G.,
461 Duguid, J. P., Fraser, A. G., Marmion, B. P., Eds.; Churchill
462 Livingstone: New York, 1989; pp 141–160.
- (29) Lin, M.; Al-Holy, M.; Chang, S.-S.; Huang, Y.; Cavinato, A. 463
G.; Kang, D.-H.; Rasco, B. A. Rapid discrimination of *Alicy-* 464
clobacillus strains in apple juice by Fourier transform infrared 465
spectroscopy. *Int. J. Food Microbiol.* **2005**, *105*, 369–376. 466
- (30) Lin, M.; Cavinato, A. G.; Huang, Y.; Rasco, B. A. Predicting 467
sodium chloride content in commercial king (*Oncorhynchus* 468
tshawytscha) and chum (*O. keta*) hot smoked salmon fillet 469
portions by short-wavelength near-infrared (SW-NIR) spectros- 470
copy. *Food Res. Int.* **2003**, *36*, 761–766. 471
- (31) Holt, C.; Hirst, D.; Sutherland, A.; MacDonald, F. Discrimination 472
of species in the genus *Listeria* by Fourier transform infrared 473
spectroscopy and canonical variate analysis. *Appl. Environ.* 474
Microbiol. **1995**, *61*, 377–378. 475
-
- 476
477 **Received for review April 6, 2006. Revised manuscript received June**
478 **6, 2006. Accepted June 8, 2006. This work was supported by Wash-**
479 **ington State University International Marketing Program for Agricultural**
480 **Commodities and Trade (IMPACT) Center, Washington State**
481 **University, U.S. Department of Agriculture NRICGP, Aquaculture**
482 **Idaho/Washington, and the Western Regional Aquaculture Consortium.**
- JF0609734 483