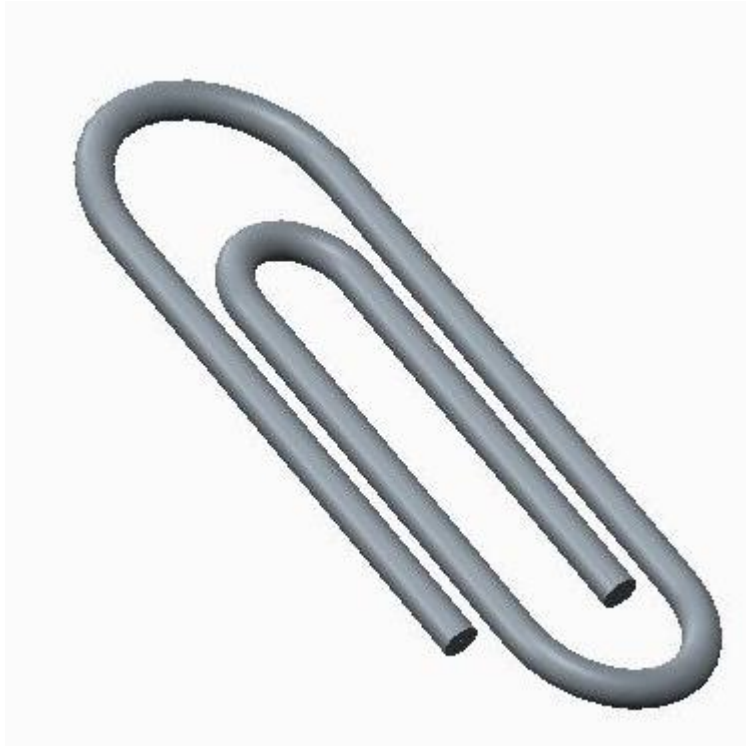


Lab 05

Advanced Parts: Sweep, Helical Sweep and Blend

Dr. Mohammad A Gharaibeh

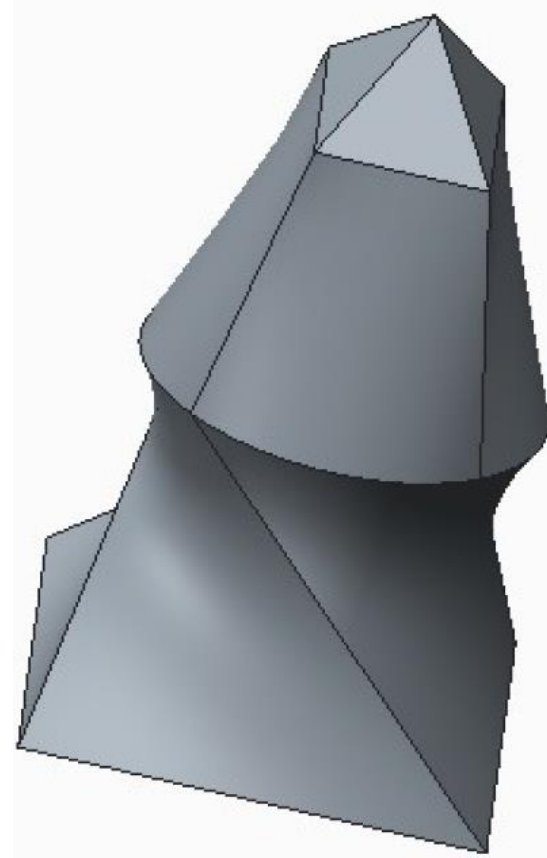
Sweep, Helical Sweep and Blend



Sweep: Path and Section

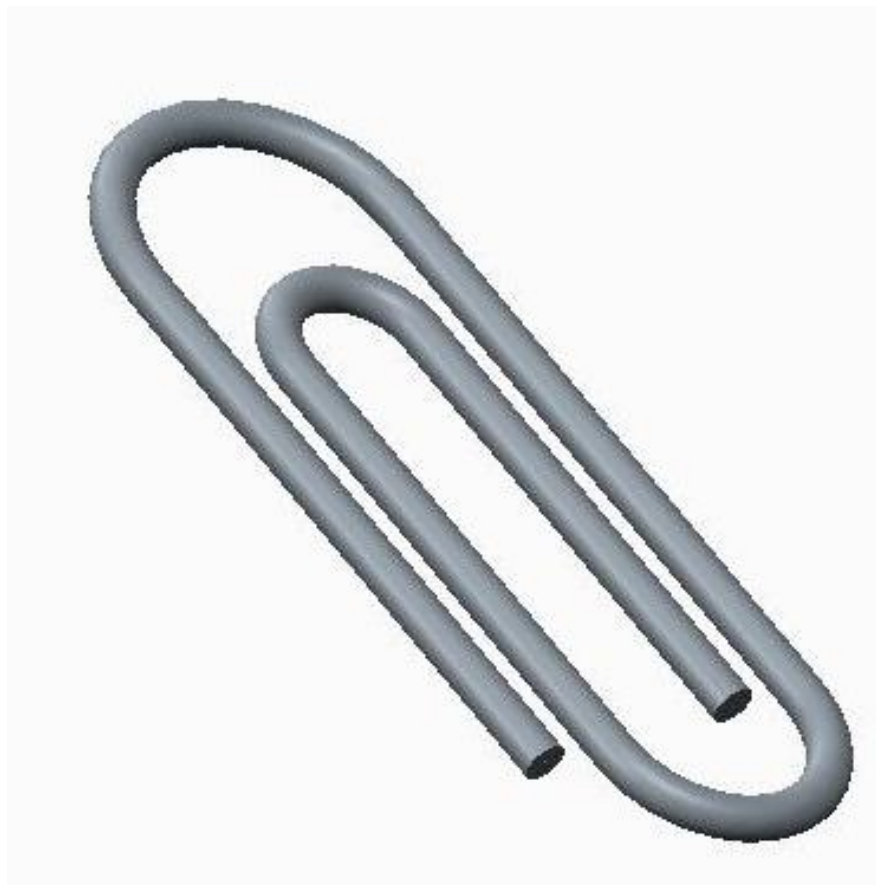


Helical Sweep: Helical Path and Section



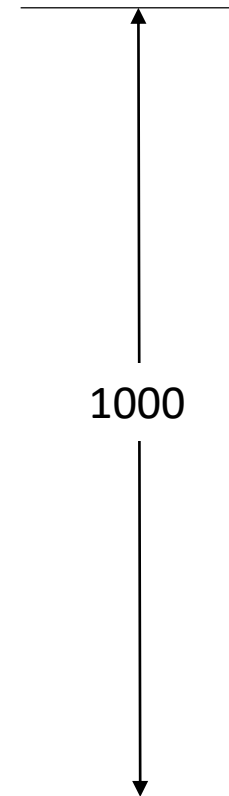
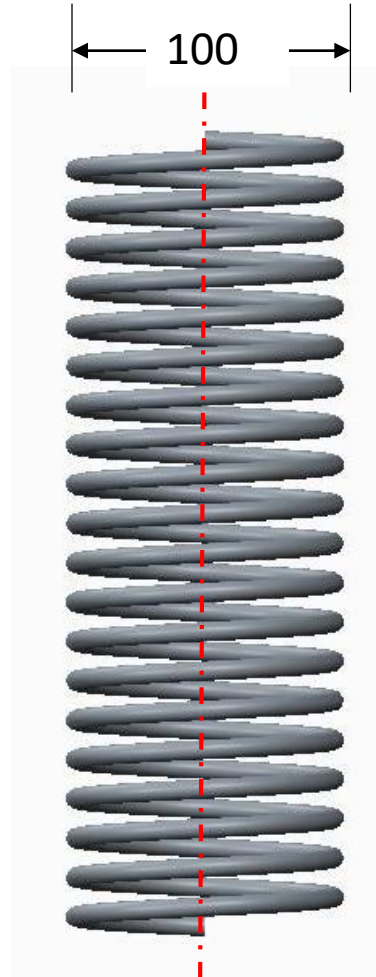
Blend: Merging (blending) two or more sections

Sweep: Paper Clip

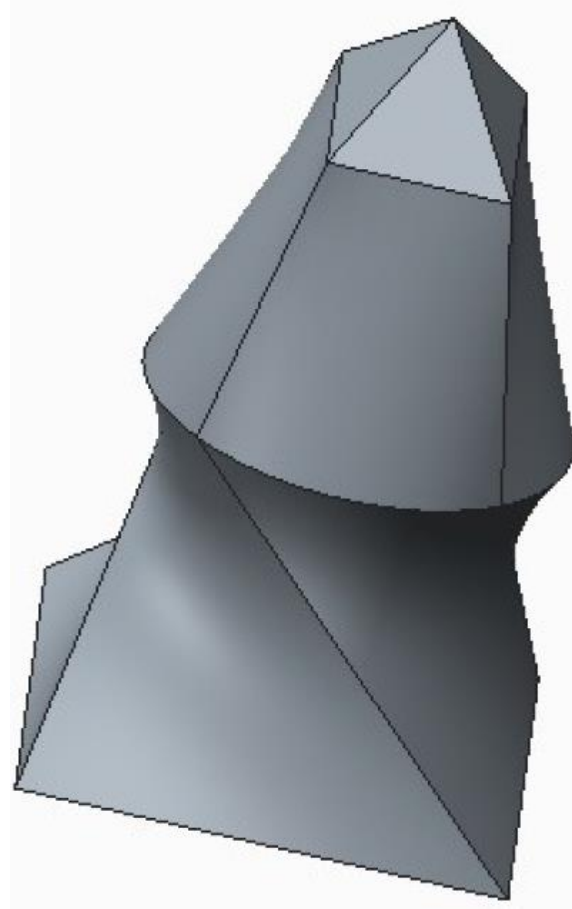


Helical Sweep: Spring

Number of loops = 20
Pitch = $1000/10 = 50$



Blend: Drill Head



Homework

Estimate dimensions for this part and draw it using CREO Parametric Software

- 1 → Sweep
- 2 → Blend
- 3 → Helical sweep
- 4 → Extrude

